

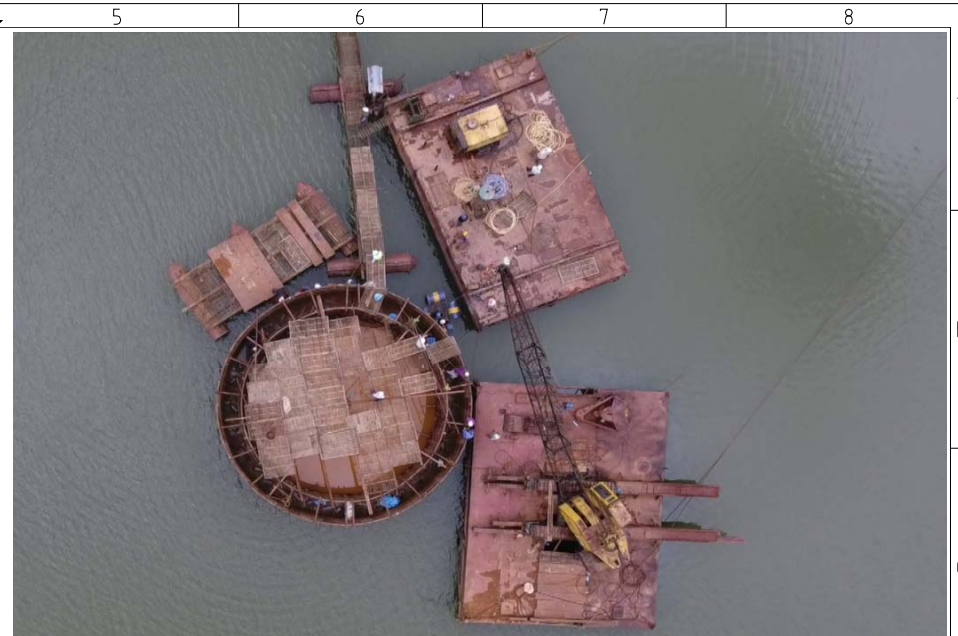
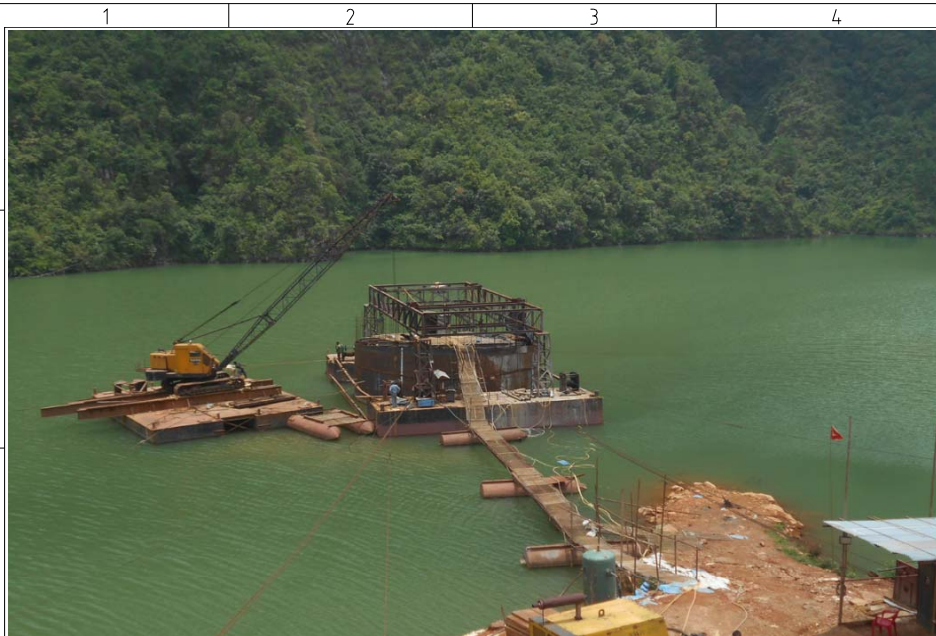
**Government of Meghalaya
Public Health Engineering Department**



**JNNURM Projects
Greater Shillong Water Supply Project (Phase-III)**

Progress of Implementation

April 2017



Construction of RCC Intake Well is in progress.



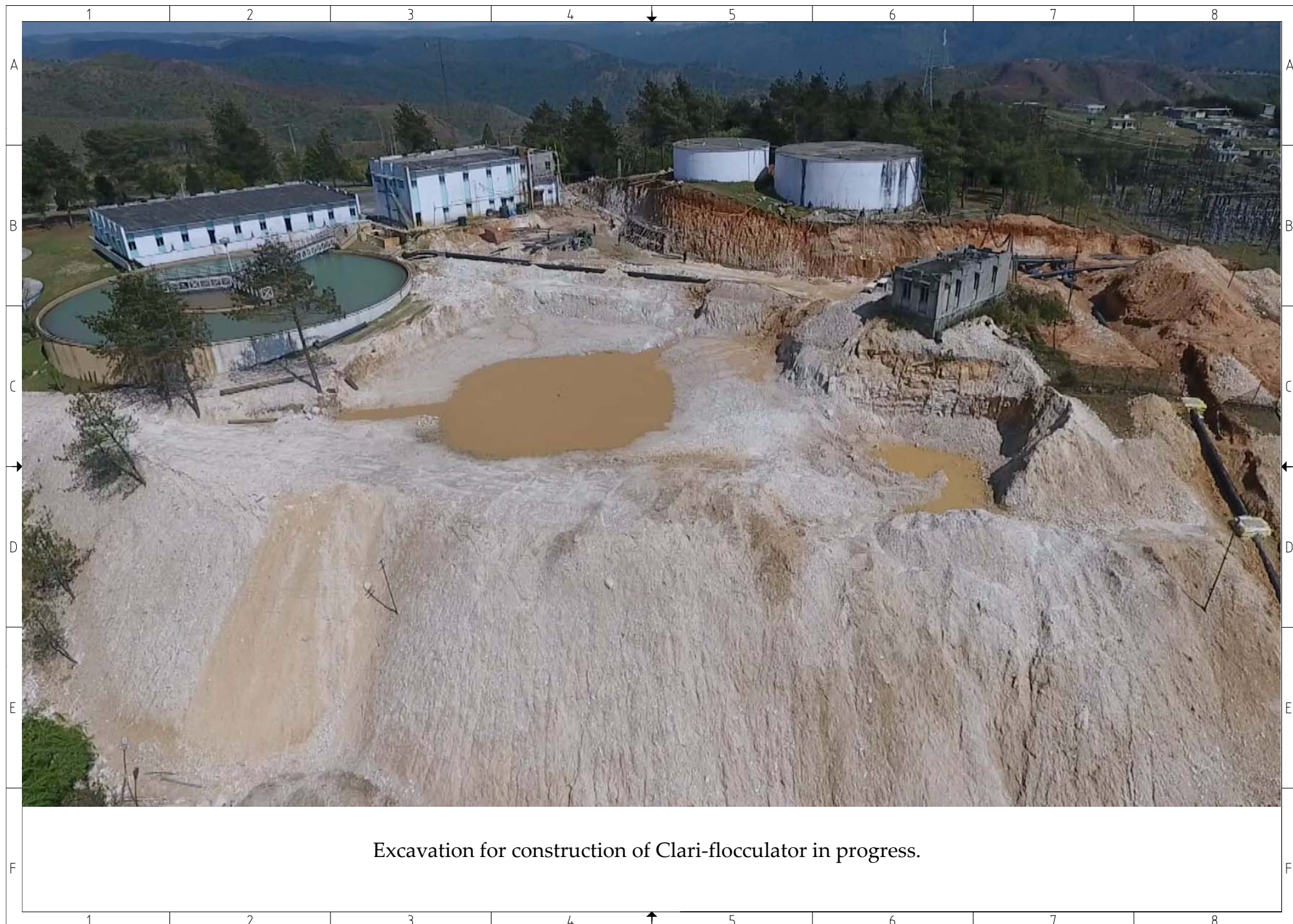


Earthwork excavation for 2nd Stage Pumping Station in progress.



Laying of Raw Water Rising Main comprising of 508mm ϕ M.S. Pipe in the process.





Excavation for construction of Clari-flocculator in progress.



The new 1000mm ϕ D.I. Pipe for conveying the supply from the twin Clear Water Reservoir.



Construction of 1000 Kl. Capacity Clear Water Reservoir have been completed



Construction of CWR of capacity 1000 Kl. have been completed. Clear Water Reservoir will link the supply with the 1000mm ϕ DI Pipes.



Transportation and Laying Gravity Main comprising of 1000/900/750 mm ϕ DI pipes





Laying of 1000/900mm ϕ DI Pipe in progress.

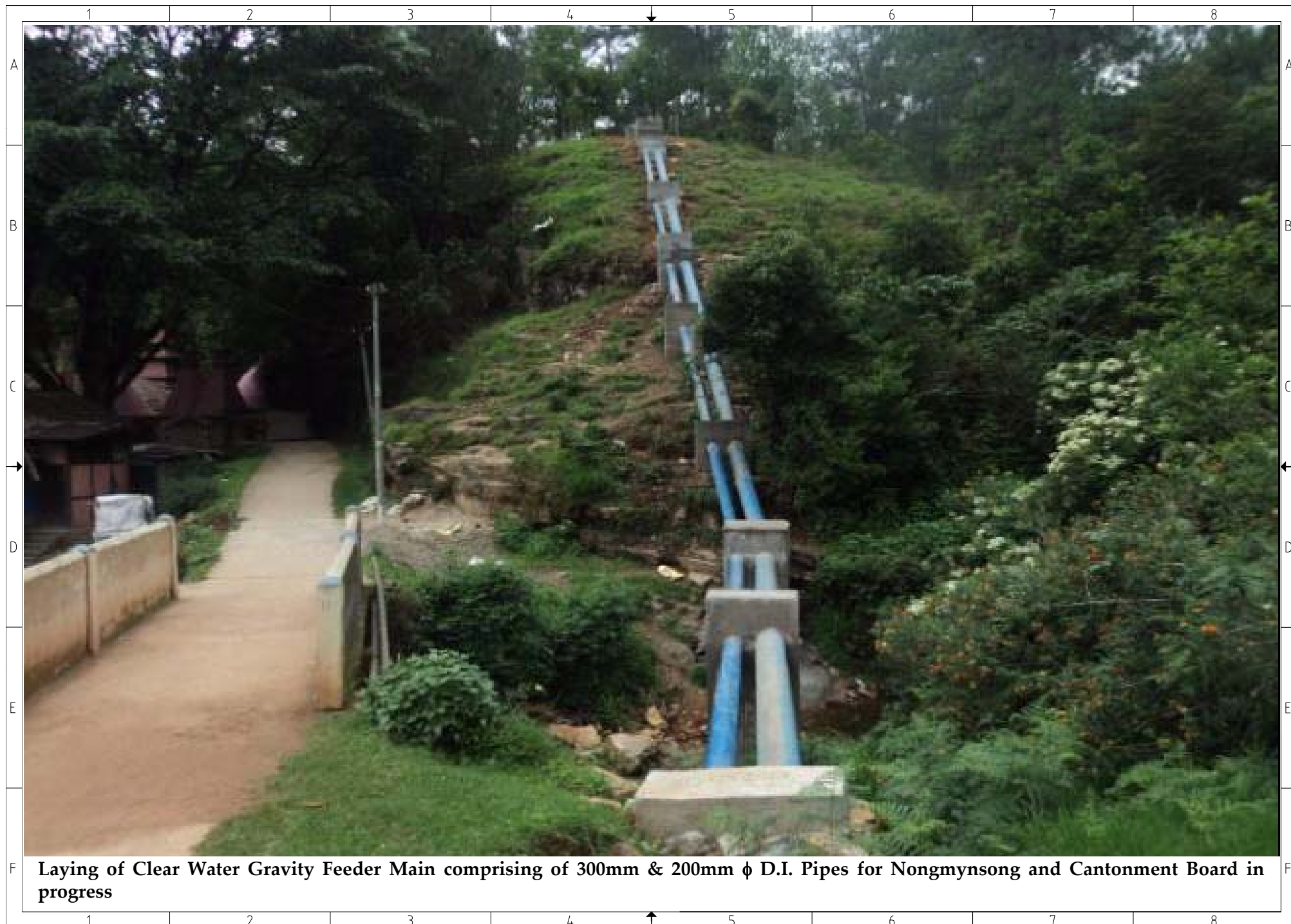


Construction of Zonal Reservoir and Booster Station at 6th Mile, Upper Shillong have been completed



Laying of Clear Water Rising Main comprising of 300mm ϕ D.I. Pipes in progress.





Laying of Clear Water Gravity Feeder Main comprising of 300mm & 200mm ϕ D.I. Pipes for Nongmynsong and Cantonment Board in progress



Laying of Clear Water Gravity Main from 6½ Mile comprising of 300mm, 200mm & 150mm D.I. Pipes for Nongmynsong, Cantonment Board and Mawlai respectively, in progress.





Zonal Reservoir of 1.12ML capacity with 3.00m staging for Laitumkhrach area with location at Fruit Garden is completed.



Zonal Reservoir of capacity 0.14 ML with 3m Staging for Mawlai area with location at Mawlai Nongkwar is completed



Zonal Reservoir of capacity 0.09 ML with 6m Staging for Mawlai area at Mawlai Mawroh is in progress



Laying of Distribution Network in progress.





Laying of Distribution Network in progress.





Restoration work in progress.





Restoration work in progress.

